

## Assembly Instructions

Please follow the directions below for assembling your swing.

### Step 1.

Check package contents for the following parts:

Fabric Mat; 2-Hanging Ropes; 4-Steel Tubes; 8-Screws



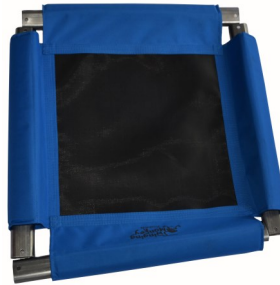
### Step 2.

Spread the fabric mat out on an even surface.



### Step 3.

Insert the four steel tubes into each side of the fabric mat.



### Step 4.

Connect the corners using the plastic corner pieces attached to the ends of the hanging ropes.



### Step 5.

Using the included screws, insert one end into each side of the swing frame and manually tighten until screw catches. Repeat 8 times.



### Step 6.

Use two allen wrenches to tighten the screws. Repeat 8 times.



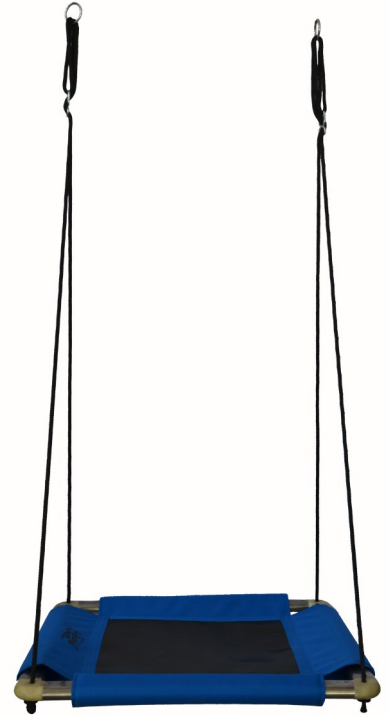
### Step 7.

Double check all four corners and eight screws to ensure all connection points are secure.



### Step 8.

Confirm swing hangs straight and appears like photo, use adjusting link to find proper height.



**For ages 3 and up. Max weight 100kgs. Adult installation and supervision required.**